

TDG (FORD / JLR)

TRANSIENT DISTURBANCE GENERATOR



Transient disturbance generator FORD TDG

The relating standards:*

ISO 7637-2
ISO 7637-3
ISO 16750-2
ISO 21848
LV124
VDA320 (LV148)
BMW GS 95002
BMW GS 95002-2
BMW GS 95003-2
BMW GS 95024-2-2
BMW GS 95026
FCA CS.00054
Fiat 9.90111-01
Ford FMC1278
GMW 3097
GMW 3172
JLR EMC-CSv1.0A4
MAN M 3285
MBN LV 124-1
MBN 10567
Mitsubishi ES-X82114
Mitsubishi EX-X82115
Nissan 28401NDS02
PSA B21 7110
Renault 36-00-808/--M,N
SAE J 1113-11
Volvo 31822854
Volvo 31850329
VW 80000
VW 82148
VW TL 81000
Magnetic field test

** The TDG can be used for certain tests within these standards. Additional equipment might be required. For detailed information, please contact sales@spitzenberger.de.*

- ✓ Pre-programmed pulses to meet automotive standards
 - CI 220 A1 Mode 1, 2
 - CI 220 A2-1 Mode 1, 2, 3
 - CI 220 A2-2 Mode 1, 2, 3
 - CI 220 C-1 Mode 2, 3
 - CI 220 C-2 Mode 2, 3
 - CI 260 F
 - RI 130
- ✓ Simulator control via webinterface and interface commands
- ✓ Test and evaluation software available

PULSE GENERATOR FOR TRANSIENT DISTURBANCES

TOUCHSCREEN USER INTERFACE

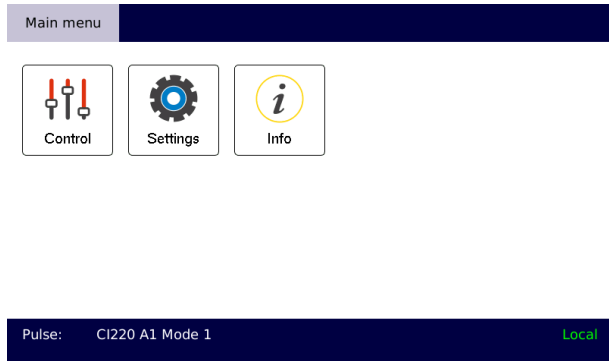


Fig. 1: Main menu

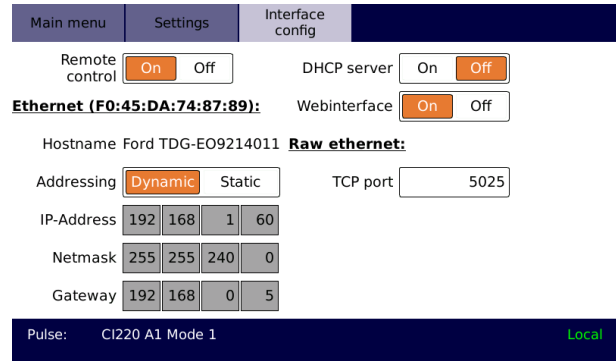


Fig. 2: Interface configuration

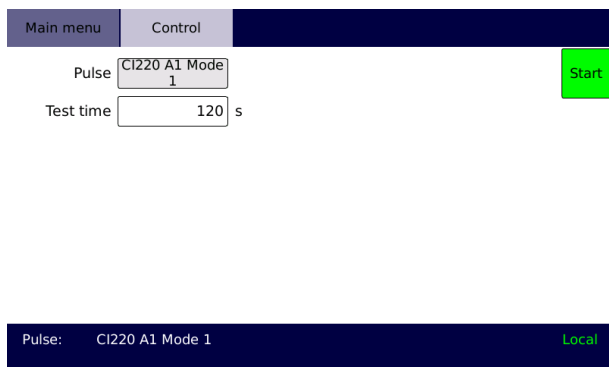


Fig. 3: Control setting

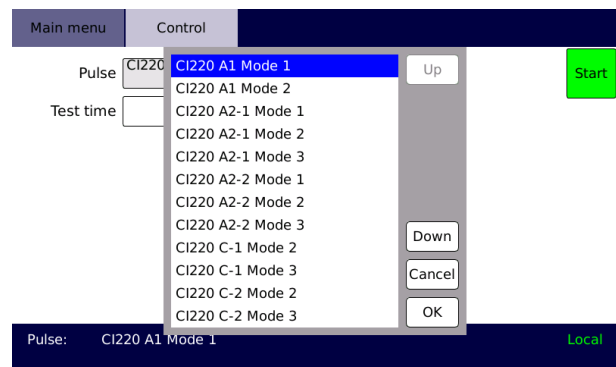


Fig. 4: Predefined pulses

SOFTWARE CONTROL

SPS TestManager

- ✓ Test and evaluation software for fully compliant emission and immunity tests
- ✓ Automated test run of various automotive standards

Command interface

- ✓ Easily integrate the device into your own software applications
- ✓ Remote control commands are based on the SCPI standard

Webinterface

- ✓ Monitor and control the connected device via a web browser

TECHNICAL DATA

		TDG
DC input signal source 1		12 V ... 14 V
DC input signal source 2 (CI 260 F)		5 V
Output		Pulse CI 220 A1, A2, C (mode 1, 2, 3) Pulse RI 130 Pulse CI 260 F
Hour counter (max.)		100 h, with reset function
Internal control unit		
	<i>Display</i>	7.0" touchscreen (17.8 cm, resolution 800 x 480)
	<i>User interface</i>	touchscreen / front panel button / incremental encoder webinterface
Interface		Ethernet 100 Mbit/s (HiSLIP SCPI) USB 2.0 Host
Ambient temperature		+10 °C up to +40 °C
Storage temperature		-25 °C up to +60 °C
Relative humidity		non condensing, max. 80 % for temperature < 31 °C, decreasing linearly to 50 % at 40 °C
Ingress protection		IP20
Power supply (± 10 %, 50/60 Hz)		230 V
Line protection, connection		2 A, Schuko
Housing		desktop unit or plug-in, colour light grey (RAL 7035)
	<i>Generator</i>	19", 4 U
	<i>approx. dimension (H x W x D)</i>	178 x 483 x 450 mm
Weight	<i>Generator (approx.)</i>	8 kg